

Upper Beeding Parish Council proposed surface improvements to the 'Upper Beeding - Saltings Loop' footpath

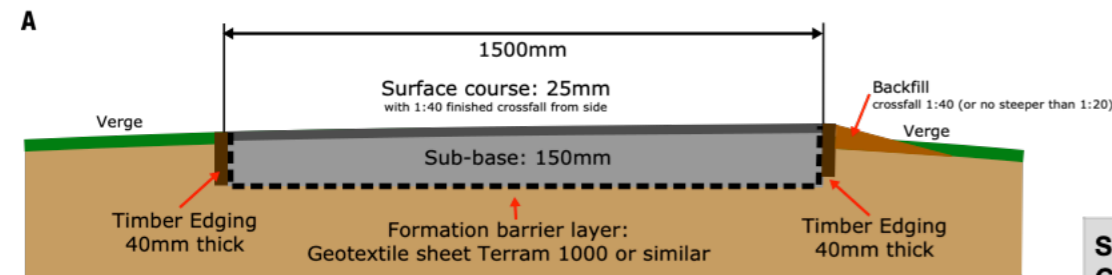
To upgrade non surfaced sections to rolled stone, providing a sustainable, safe, all-season walking route beside the River Adur in Upper Beeding.

Path Details

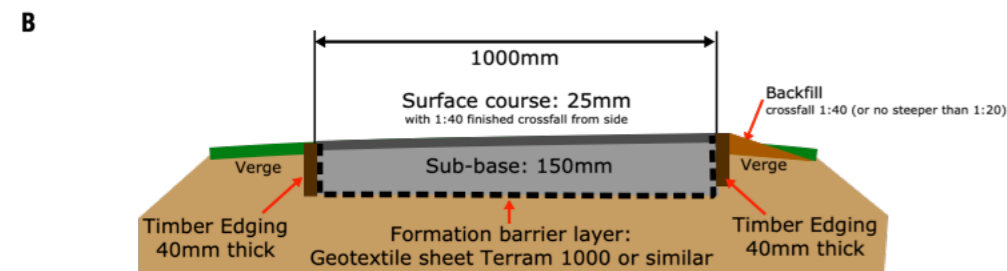
Section	PROW Footpath numbers	Scheme Type	Cross Section Ref	Length	Notes	
Pumping Station kissing gate to Riverside House kissing gate	1	FP 3203	1.5m	A	310m	On top of riverbank, on current PROW route.
Kissing gate to Beeding Bridge (north side)	2	FP 3203	1m	B	130m	On top of riverbank. The riverbank is narrower in this section, accommodating a narrower (1m) path. See UBSL/003 for routing details at the Riverside Road/High St end.
Beeding Bridge (south side) to end of surfaced section.	-	-	-	-	-	Already surfaced path on private land, with a gate at either end allowing access. No work required.
Beginning of unsurfaced section on riverside, to tarmac path access from Dawn Crescent	3	FP 3139*	1.5m	A	310m	Where tree roots cross the path, they must be built over. See 'No-dig Zones' notes on UBSL/002 and 004. Any existing stone surfaces/infills to be removed and replaced. * At the southern end, the route diverts off the PROW path through Upper Beeding PC owned land.

Scheme / Cross Sections

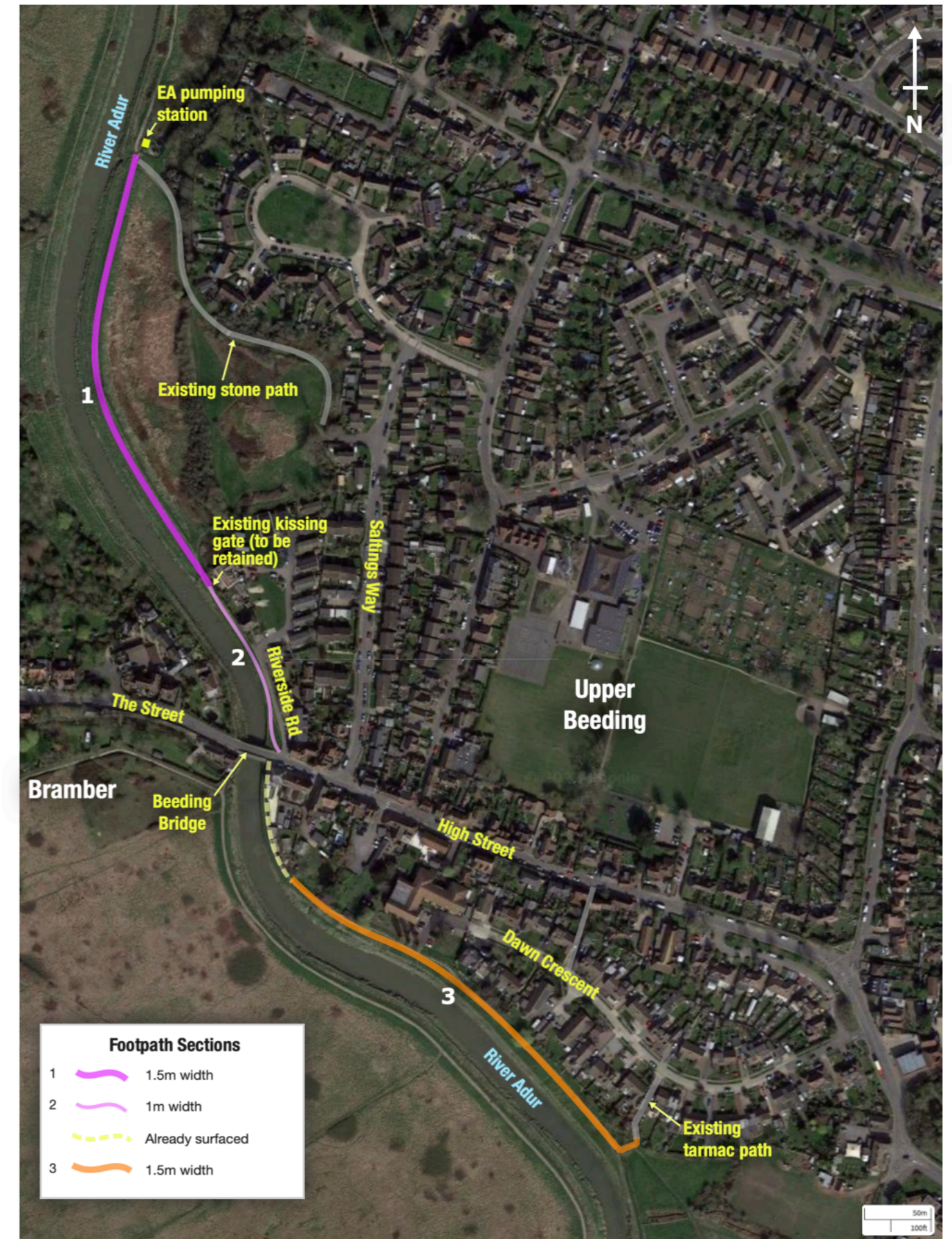
For details see UBSL/002



Surface Course 25mm	Limestone dust, rolled and compacted
Sub Base 150mm	MoT Type 1 well-compacted clean granite chippings or clean limestone (the pink stuff)



Upper Beeding and River Adur, West Sussex



Imagery ©2022 Bluesky, Getmapping plc, Infoterra Ltd & Bluesky, Maxar Technologies, Map data ©2022

**Upper Beeding
Parish Council**

The Sports Hall
Memorial Fields
High Street
Upper Beeding
BN44 3WN
01903 816911

Upper Beeding - Saltings Loop
footpath

Drawing Name: Key plan/overview

Date: Dec 2023

Drawing Number: UBSL/001 Rev: A Size: A3

Revision history