

Upper Beeding Parish Council proposed surface improvements to the ‘Upper Beeding - Saltings Loop’ footpath

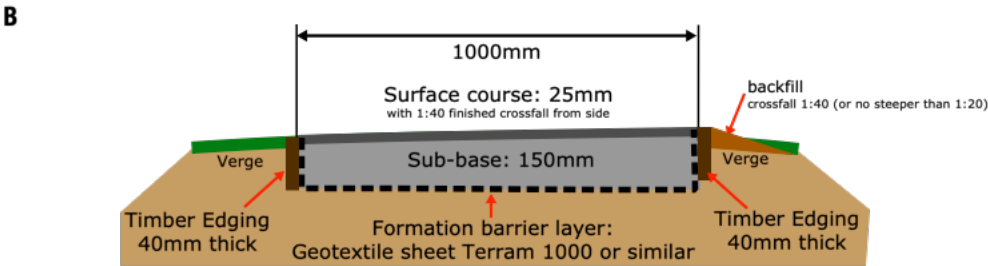
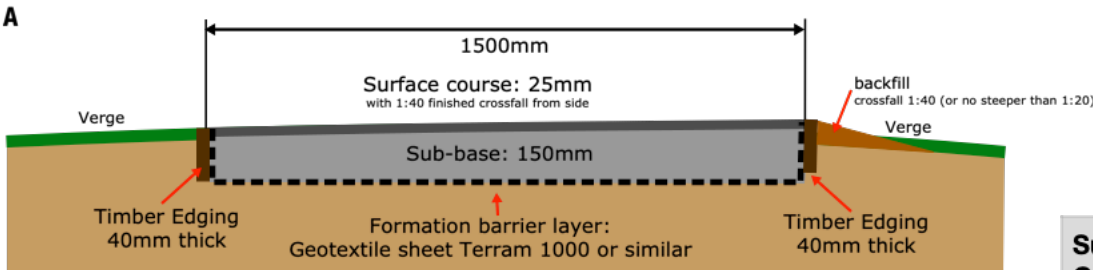
To upgrade non surfaced sections to rolled stone, providing a sustainable, safe, all-season walking route beside the River Adur in Upper Beeding.

Path Details

Section		PROW Footpath numbers	Scheme Type	Cross Section Ref	Length	Notes
Pumping Station kissing gate to Riverside House kissing gate	1	FP 3203	1.5m	A	310m	On top of riverbank, on current PROW route.
Kissing gate to Beeding Bridge (north side)	2	FP 3203	1m	B	130m	On top of riverbank. Riverbank is narrower in this section, accommodating a narrower (1m) path. At the road end, the route enters Riverside Road at the current position between a gate post and fence (see UBSL/003).
Beeding Bridge (south side) to end of surfaced section.	-	-	-	-	-	Already surfaced path on private land, with a gate at either end allowing access. No work required.
Unsurfaced section on riverbank to tarmac path access from Dawn Crescent	3	FP 3139	1.5m	A	310m	Tree trunks along route will need to be built over ('Non Dig' see notes on UBSL/002 and 004). Any existing stone surfaces/infills to be replaced (eg short section at Dawn Crescent end).

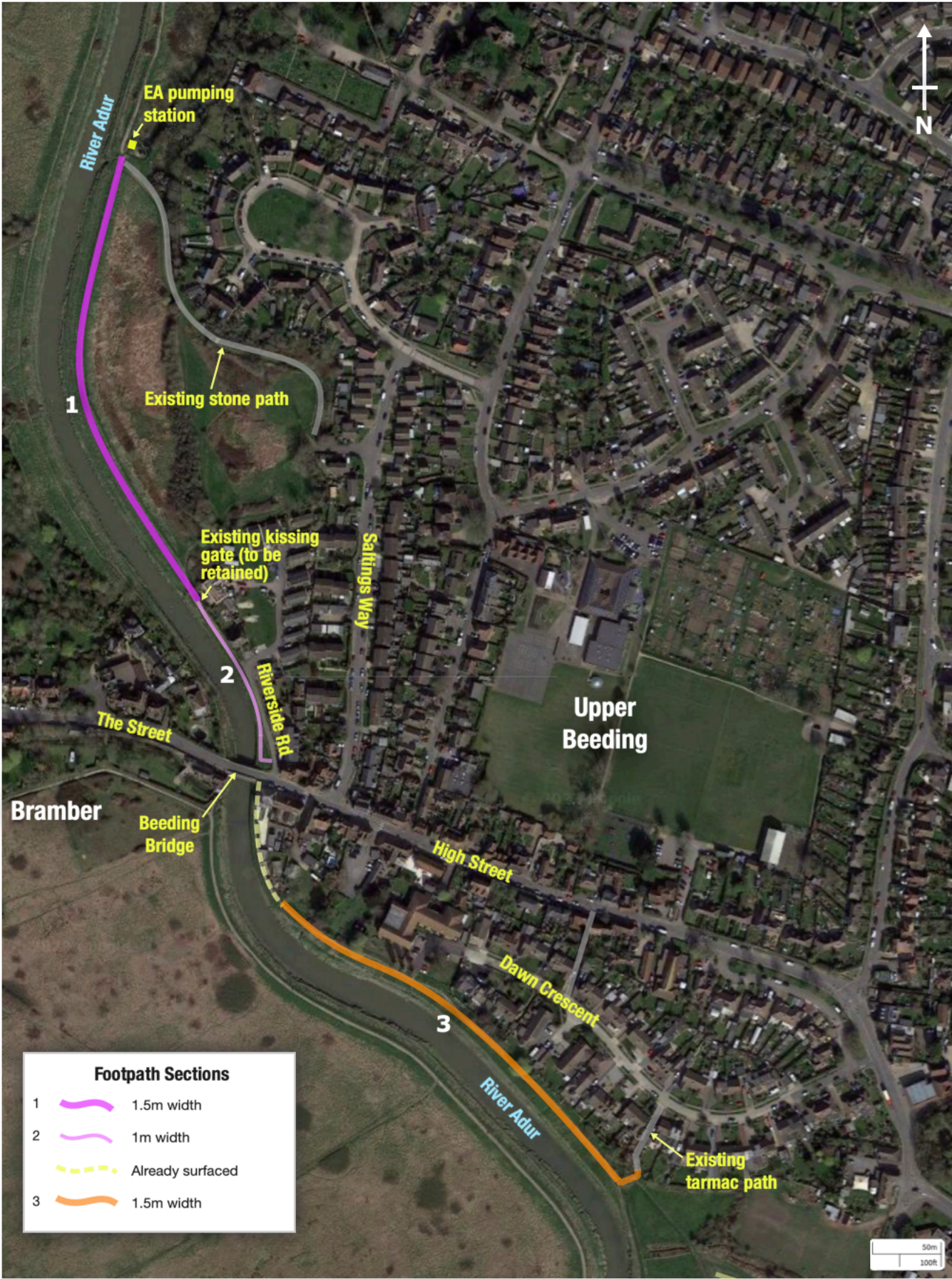
Scheme / Cross Sections

For details see UBSL/002



Surface Course 25mm	limestone dust, rolled and compacted
Sub Base 150mm	MoT Type 1 well-compacted clean granite chippings or clean limestone (the pink stuff)

Upper Beeding and River Adur, West Sussex



Imagery ©2022 Bluesky, Getmapping plc, Infoterra Ltd & Bluesky, Maxar Technologies, Map data ©2022

Upper Beeding  
Parish Council

The Sports Hall  
Memorial Fields  
High Street  
Upper Beeding  
BN44 3WN  
01903 816911

Upper Beeding - Saltings Loop  
footpath

Drawing Name:	Key plan/overview
Date:	Dec 2023
Drawing Number:	UBSL/001 DRAFT3 Size: A3

Revision history