

# Upper Beeding Parish Council

## Spring 2025 Newsletter

### WELCOME AND INTRODUCTION

In this edition we give an overview of the Riverside Walk project, the Skatepark and the White Bridge Link.

### FINANCE

Parish Councils are responsible for managing their own budgets and are funded by an annual payment, or precept, collected by the District Council. This forms part of your Council Tax.

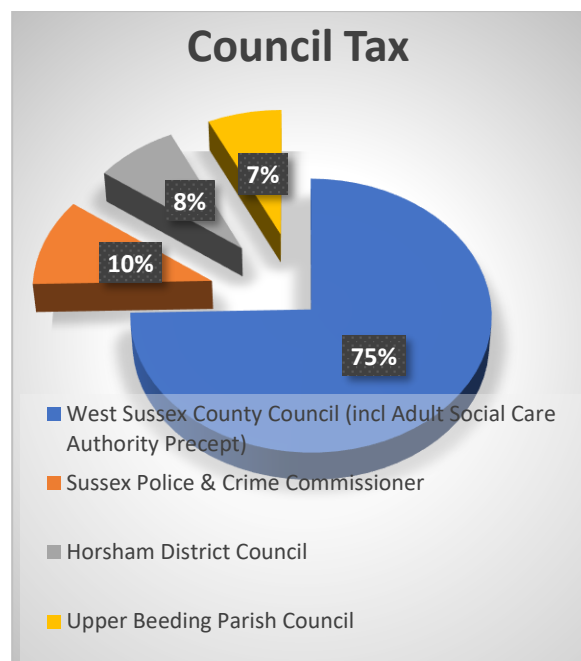
West Sussex County Council, Horsham District Council, Sussex Police & Crime Commissioner and Upper Beeding Parish Council all produce budgets detailing the amount of money needed to run services for local people.

The chart shows that the major share goes to West Sussex County Council. Upper Beeding Parish Council receives 7% or 7 pence in every £1 of your overall Council Tax.

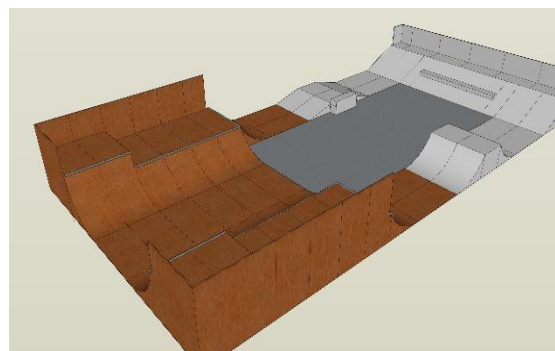
This money pays for the maintenance and management of the two play areas, the skatepark, bus stops streetlighting, allotments, Sports Pitches and Riverside path.

Each Autumn, Upper Beeding Parish Council plans its spending – its Budget - for the financial year which begins on 1 April. Our Budget for 2025/26 has been kept below the rate of inflation at that time. We have worked very hard to keep spending as low as possible. The amount residents have been asked to pay is slightly higher than last year, about 15p a week for a Band D property.

If you would like further information the detailed budget is on our Parish Council website.



### SKATE PARK UPGRADE



UBPC and the Friends of Small Dole Skate Park have been working together for several years striving to find a way to upgrade the skate park, which is near the Mackley Estate.

Grants were successfully applied for through the Lottery and South Downs National Park, the funds raised by the 'Friends of' group and a very generous donation by a local business which ensured that the first part of the project can be completed. The second stage needs to be funded.

Recently a kind benefactor has pledged the final £17,000 to allow the implement phase one, which is to replace the oldest section of the skate park. Work should commence in June.

## RIVERSIDE PATHWAY UPGRADE



Steyning & District Community Partnership exists to provide activities and facilities which the three local Parish Councils, Bramber, Steyning and Upper Beeding, may struggle to fund through their own resources or by grant funding.

With the help of the residents who filled in the short online survey, the Parish Council was awarded a £59,000 grant which, along with other secured funds, allowed the footpath project to be completed in early 2025.

The current project, while the White Bridge is being replaced, allowed the Parish Council to upgrade the footpath from the Saltings Way pumping station through to Dawn Crescent.

The new pathway ensures a safe surface all year round and the Parish Council will be involved, where they can, to maintain the grass and hedges.

Photo of the completed pathway



## SPEEDWATCH

Upper Beeding Parish Council is working with Sussex Safer Roads Partnership (Sussex Police & Community Speedwatch) to launch a new Upper Beeding Speedwatch group.

This has been set up by the Parish Council and has volunteers from the community who are concerned at the speed some cars travel through our village, totally disregarding speed limits and compromising the safety of pedestrians.

The team is going through training at the moment and hope to be operational in June.

If you tend to speed through our village:

### YOU BETTER WATCH OUT

If you would like to join the group, please contact Sean Teatum on [sean.teatum@upperbeeding-pc.gov.uk](mailto:sean.teatum@upperbeeding-pc.gov.uk)

Other organisations:

Upper Beeding Football Club:

[www.upperbeedingfc.com](http://www.upperbeedingfc.com)

Upper Beeding Cricket Club -

[www.facebook.com/Beedingandbrambercc](https://www.facebook.com/Beedingandbrambercc)

The HUB at Upper Beeding Baptist Church.

<https://www.thehubbeeding.org/contact/>

Community Wardens.

[SBUB.Wardens@horsham.gov.uk](mailto:SBUB.Wardens@horsham.gov.uk)

Melody for the Mind at Steyning Library

[steyning.library@westsussex.gov.uk](mailto:steyning.library@westsussex.gov.uk)

Carers Support

[www.carerssupport.org.uk/](http://www.carerssupport.org.uk/)

Love to Move:

[worthing.shoreham@rightathome.co.uk](mailto:worthing.shoreham@rightathome.co.uk)

West Sussex Dementia:

[www.westsussexdementia.org.uk/](http://www.westsussexdementia.org.uk/)

Dementia Friendly Village:

[www.upperbeeding-pc.gov.uk/community/](http://www.upperbeeding-pc.gov.uk/community/)

## YOUTH SERVICE

The new Youth Club appears to be popular here in Upper Beeding.

The Youth Service started in August 2024 with a week of activities enjoyed by local young people. In the autumn a regular club on a

Thursday started. Which has been very popular with over 20 young people attending each week. The

### NEW SPEED INDICATOR DEVICES (SID's)

It is recognised that the 30mph limit on the Henfield Road with its immediate drop from 60mph limit could be more effective, therefore, the Parish Council continue to look at ways to make the Village safe, roads in particular. The Parish Council has been working with a local businessman to install two new SID's in the village.



Therefore, a new SID will be installed in the coming weeks.

Also, following the work of the Parish Council resulting in a reduced speed limit and improved crossing on the A283, a new SID will also be installed close to the residential area of Dacre Gardens.

### LOCAL CYCLING AND WALKING PLAN

Over the last few years, a whole range of 'active travel' initiatives have been suggested for the Steyning, Bramber & Beeding area to encourage people to leave their cars at home and walk and cycle more.

These include, installing improved bike racks in Steyning High Street, creating zebra crossings near schools, reducing speed limits on the bypass, and upgrading the White Bridge Link across the river.

So far, and for a variety of reasons, progress has been slow.

But there is no doubt that many residents would welcome a shift in this direction; particularly parents with young children who need to get safely to and from school and walkers and others of all ages who wish for better facilities to improve their mobility and independence.

### VOLUNTEERS

Your local parish council is ambitious to improve our environment, greenery, and pathways.

Increasingly, hard-hit County and District councils are able only to finance essential services.

So, we are going to need your help.

You may have read how volunteers helped establish the Community Orchard at Hyde Street Green and the Litter Volunteers who regularly clear the roads.

Can you help us to further improve the Green by joining in clearing unsightly shrubs and brambles?

We also have other projects too!

We have many similar projects, but we don't have the resources to achieve these without your help. We really do need you!

### VOLUNTEERS FOR LITTER PICKING (THE BIN BRIGADE)

Would you like to help keep our villages litter free? The Bin Brigade group, supported by UBPC, meet once a month to pick up litter from our roads and pavements. The group was started by Neil Laughton and helped by Hilary Bennison.



#### ***3 hours rubbish from the Henfield Road***

Get in touch with the Clerk: 01903 896988 or [clerk@upperbeeding-pc.gov.uk](mailto:clerk@upperbeeding-pc.gov.uk)

### BEEDING IN BLOOM

Beeding in Bloom needs volunteers/members, so if you are able spare a little time to help make the Parish a friendly, pleasant place to live, please contact Mary Levett on 01903 815137 or Colette Harber on 01903 814586.



## UPDATES

### Parish Council Office

The first floor of the Sports Hall has become the Clerk's office, as it is a central position in the Village. The works to create an office space will be carried out in the summer months. The planning has taken longer than expected.

### Public Access Defibrillators (PADs)

Steyning Area First Responders Trust (SAFeR) has added two PADs in Beeding. A local business has kindly sponsored one at the Bostal. The second is located on the Sports Hall and SAFeR is indebted to the Parish Council and Upper Beeding Football Club for making the machine available for public use.

## Greening Steyning's Repair Cafe and Home Energy Helpdesk

Greening Steyning have been running a successful Repair Cafe from Beeding and Bramber Village Hall since 2021 and have carried out an amazing 1500 repairs and sharpened nearly 1600 tools.

We are lucky to have an experienced tool sharpening service, and specialist repairers for clocks and watches, electronics, bikes, textiles, furniture, jewellery and everything in between. Lots of people come just to enjoy the great cakes, tea, and coffee. Every time a successful repair is made, you'll hear a bell being rung, followed a spontaneous round of applause. It's a friendly and cheerful way to spend Saturday afternoon!

Also at the Repair Cafe are the Home Energy Helpdesk; experienced volunteers who can advise about how to improve your insulation and heating, but also what grants are available and how to apply for them.

Find us there on the 2nd Saturday every month 2-4pm. More details at [www.greeningsteyning.org](http://www.greeningsteyning.org)

## COUNCILLORS

This year we have been fortunate to co-opt a new Member onto the Council.

Jessica Edwards lives in Small Dole. She knows the area well and is very keen to see the Small Dole Skatepark and play areas upgraded.

There are eleven active Councillors currently in place. This means that there are 4 vacancies.

<b>SMALL DOLE WARD (Up to 3 Councillors)</b>
BULL Peter
WARREN Chris
EDWARDS Jessica

<b>UPPER BEEDING WARD (up to 12 Councillors)</b>
BIRNSTINGL Simon
BULL Frank
CANNON Jill
DEADMAN Chris
HARBER Bob
HEAVER Fred
KARDOS Tom
TEATUM Sean

If you are interested in becoming a local Councillor, please contact the Parish Clerk.

## MEETING DATES

<b>2025 - 2026</b>	<b>Full Council</b>
<b>June</b>	Tuesday 24 <sup>th</sup>
<b>July</b>	Tuesday 22 <sup>nd</sup>
<b>September</b>	Tuesday 23 <sup>rd</sup>
<b>October</b>	Tuesday 28 <sup>th</sup>
<b>November</b>	Tuesday 25 <sup>th</sup>
<b>December</b>	Tuesday 17 <sup>th</sup>
<b>January</b>	Tuesday 16 <sup>th</sup>
<b>February</b>	Tuesday 20 <sup>th</sup>
<b>March</b>	Tuesday 24 <sup>th</sup>
<b>April</b>	Tuesday 28 <sup>th</sup>
<b>May</b>	Tuesday 26 <sup>th</sup>

Additionally, there are Community, Facilities, Planning, Finance and Staffing Committee meetings at intervals through the year. Details of all meetings are on the website.